

## **SATISH CHANDRA AND HIS ROMANTICISM WITH SCENIC BEAUTY**

**Abdul Salam Khan\* , Saroj Bhargava\*\***

*\* & \*\* Deptt. of Performing & Visual Arts*

*Mewar University, Gangrar, Rajasthan*

Reference to this paper  
should be made as follows:

**Abdul Salam Khan\* &  
Saroj Bhargava\*\* ,**

*SATISH CHANDRA AND  
HIS ROMANTICISM WITH  
SCENIC BEAUTY,*

Artistic Narration 2018,  
Vol. IX, No.1, pp.8-14

[http://anubooks.com/  
?page\\_id=485](http://anubooks.com/?page_id=485)

### ***Abstract***

*Chandra was a romantic painter who always fascinated towards nature and picked of his composition from the different shades and numerous range of nature. Most of his subject are based on wild and messy jungle. Beside this Mountain Scape, Sea Scape, Blossom study are some of his favorite subject. He had gave importance to the sky in all of his creation. Sky is placed an important role not for just variety of color scheme but it is an integral part of the painting in terms of balance, harmony and rhythm.*

**Keywords :** *Romantic, Fascinated, Composition, Messy Jungle, Integral, Balance, Harmony, Rhythm.*

## **Introduction**

Chandra was very much found of landscapes specially the northern plain is the dream land for him. In his most of creation are focus to capture the natural beauty of it out of variety of subject he loves to be articulated traditional villages of northern plain. To satisfy his inner eager he explore each and every corner of the India from Kashmir to Kanyakumari.

He always took a simple topic for his composition with one point perspective as he was the follower of impressionism his most of work reflects the essence of old masters like Claude Monet, JWM Turner, and John Constable. Rather using the broken dab as impressionist do Chandra complete his work by apply layering of color. All of his creation have single vanishing point.

Scratching is one of his best practice to get the desired glaze, textural depiction another important element enhancing his work, evanescent color, small granular tiny dot and small landscape figure are the important features of his creation. By applying the above said technique Chandra not only balance the whole canvas but also he creates classic work. In this particular painting Chandra articulated an ideal village scene.

## **Stand Alone**

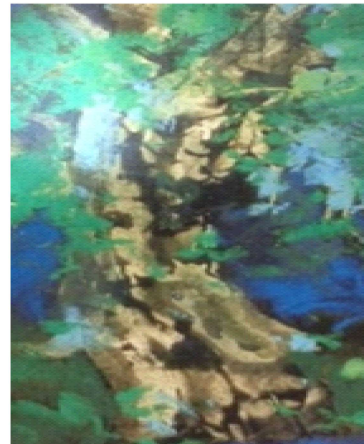


Blue is not a just a shades for Chandra but it's a whole stories which narrates the dramatic sequel to the visuals diction. It spread out in whole canvas irregularly and same amount of sap green is also mingle with cerulean blue as a result of this composition gives steadiness and calmness to the subject. The treatment of applying color on canvas is similar as impressionist do and the division of composition is based on formal division. The subject is a lonely oldie tree having the rough textural trunk, most of the part is covered by leaf.

**Figure 1 Stand Alone**

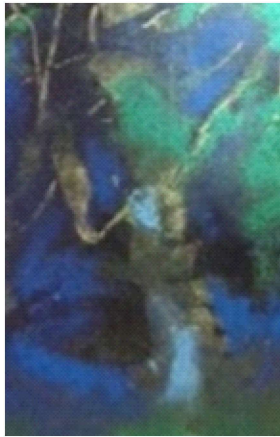
Here Chandra was used brunt umber for base of trunk, black color apply to shows the fold and

wrinkle of trunk and for highlight pale yellow and a pinch of lemon yellow are used. Just below the main subject in mid ground divided by the impression of two more tree which are almost merge with the



**Figure 1.1. Stand Alone**

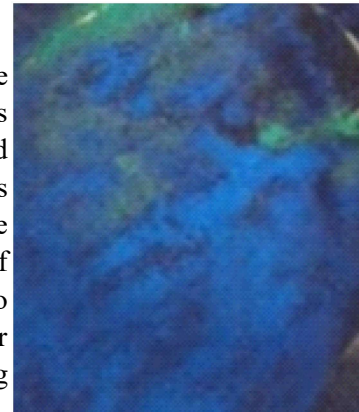
background and the fore ground filled with dull sap green, bluish purple and raw umber shows the naked land.



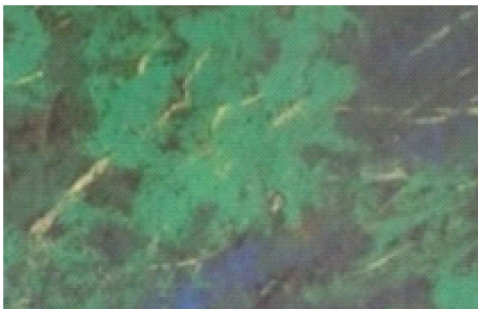
It is a very simple composition having the formal division here whole painting is balance through the color treatment and unique application. Here the artist prove there is no need to use complex element for natural composition some time only one or two focal point grace the whole composition. This is the best example of simplify work of raw nature here Chandra take one old tree at the middle of fore ground with formal division. The tree is so artistic the lower part of trunk is slightly bend like horse nail and just above it is bifurcated in many branches and it again shown many tiny sub branches spread out the whole canvas.

**Figure 3 1.2. Stand Alone**

The color of tree is just opposite to the color of whole canvas so it is prominence in existence, the base color is feel with raw umber color and highlighted part are articulated the pale yellow which gives the volume to the tree and its appealing like 3d structure and the fold and the wrinkle are fill with black color. The upper left part having a bunch of leaf having copper sulfate color which is add on charm to the composition and the right top having the variety of color patches having sap green, cerulean blue and lower part having dull sap green which is help to emphasize the subject.



**Figure 4 1.3. Stand Alone**



**Figure 5 1.4. Stand Alone**

In the second is the impression of two more tree trunk which is placed just back of the first focal point. It is almost merge with the background color and partially seen the trunk is fill with dull pale yellow due to touch of feather white it's only recognize its existence. Upper part having many tiny stem having light yellow in color so it is clearly visible in the composition and rest part of the surrounding is covered by the sap

green, cerulean blue and the some quantity of light black given depth to the layout. With this layout the Chandra demarked the mid ground from foreground.

The third focal point is part of background just side of the second focal point which is filled with bright cerulean blue which is emphasize the light and the treatment of this particular part are filled with number of color dab which gives statics to the whole composition. To balance the quantity of blue Chandra put bluish purple at the right of the foreground.

In the fourth focal point Chandra put some bunch of leaf from just upper part of the main tree. Here the leaf should not be articulated with prominent shape because lack of detailing only a bunch of leaf articulated as a volume by using sap green patches surrounding by dull blue and grey color which help to form the impression of leaf. Some lemon yellow tiny thin line are shown which gives impression of stem. In this way Chandra s successfully narrates the whole composition with simplification of form of nature and hold the attention of spectator's.

### **Melting Sky**



**Figure 6 Melting Sky**

As medium is concern Chandra was comfortable with the both medium (oil, water) and prove himself as a master painter, above painting is one of his remarkable creation based on water color on paper here Chandra form a formal division having the center focus subject at middle of the fore ground a lonely boat is placed and to support this main element some bunch of black stone are lay down front of the fore ground and rest part are filled with cobalt blue ocean. A horizon is partially shown in the composition. The fore ground ocean and back ground sky is almost blend

with each other the upper sky is covered maximum part of the composition and the treatment use by Chandra is unique wet on wet technique so the output of painting is like diffused and soft as like as wash painting look. The tri color sky enhance the charm of the composition and the vibrant shades of cadmium yellow given the contemporary look to the painting.

The first focal point are the bunch of black stone which is lay down just right side of boat its partially covered the base of the boat. Due to dark color it is clearly defends its

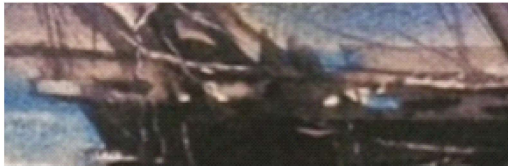


**Figure 7 1.1. Melting Sky**

existence. The transparency of medium ad on grace to the composition the light purple



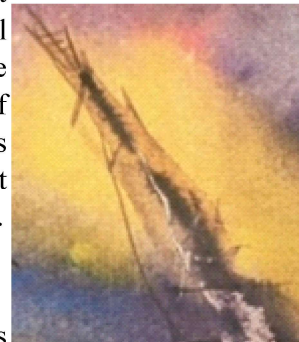
color which reflects from the dark black and the reflection of stone in water makes the composition live and at the right side of this particular part some paper white is left that break the hard ness of black color giving the feelings of soft and coolness to the whole work.



**Figure 8 1.2. Melting Sky**

Second focal point is just middle of foreground and main subject of the composition i.e. wooden boat

articulated very artistically the counter line of the boat is horizontal as parallel to the plane the body is almost done by monochrome to shows the outline Chandra put some highlight to the edges of boat and some tiny irregular vertical line are suspended towards ground that seems to be the rope this detailing creates interest to the subject and shows the observation of Chandra memory.



**Figure 9 1.3. Melting Sky**

The third focal point is an upper part of pole which is placed diagonally, slightly bend towards left. The dimension of the pole is not fix throughout



the length because of its treatment here Chandra focus on expression. The backdrop of pole is covered by Cadmium Yellow sky and rest with cobalt blue which is help to demarked the pole and due to wet on wet technique the direct black line also given the diffused look that add charmed and freshness to the painting.

**Figure 10 1.4. Melting Sky**

Fourth focal point is the part of sky just left side of background in this part lower part is covered with light cobalt blue and the upper part of left end have tint of light grey and both the part is divided by light grey that seems the impression of cloud. In this foreground some light black floating line are seen which creates the impression of birds that form the prospective of the whole painting. Some upper part of sky have the tint of purple which is succeed by tint of by Cadmium Yellow and rest is mingle with cobalt blue and this tri color fusion of sky creates a dramatic essence to the whole painting.

**Conclusion** Satish Chandra had been one of the most powerful painters in the modern generation; his brush strokes spoke loud and clear for him. He used many of his expert hand and painting techniques to modify his piece of art and create a simple piece into a

masterpiece. His detailing and broadness makes him stand ahead from others. His minute observation is well organized in different backgrounds of his painting. From the colors in the foreground to the shades in the background everything is well visible.

He uses very subtle colors to create the boldest expressions. His work and paintings of flowers is a remarkable collection that he had left others to get inspired from. The color schemes and the realistic touches give a simple piece of lines a life of its own. The paintings deliver dimensions and that is what makes his paintings more distinct and direct. All the flowers he had chosen for his painting leaves us with a certain feeling of warmth. He is the master of his art and never loses a chance to prove this through his colorful canvases.

### References

- Menakshi Chandra, *the Master of Atmospheres*, Roli Book, 2006.
- RanjitHoskote, *the Times of India, Mumbai*, 31 March 1990.
- Suneet Chopra, Art Critic, Satish Chandra Catalogue, August 2006.
- Suneet Chopra, Art Critic, Satish Chandra: Master of Atmospherics 1<sup>st</sup>December 2005
- “*Master of atmosphere*” in 2006 a biographical sketch of Satish Chandra life by his wife Menakshi Chandra.
- Truth with felt* 31 March 1990 The Times of India by RanjitHoskote.
- Master of atmosphere* 1<sup>st</sup>December 2005 Satish Chandra catalogue by Suneet Chopra, Art Critic.
- A Great Artist* roli books in 2006 by Dr. Mansoor Hassan, lucknow.
- Remembrance Satish roli books in 2006 by SunitaGhai, lucknow.
- A Great Persona roli books in 2006 by Rita Sinha, Director, NCZCC, Nagpur.
- Master of nature Suneet Chopra, Art Critic, Satish Chandra Catalogue, August 2006.
- Art Journal (RanjitHoskote, The Times of India, Mumbai, 31 March 1990)*
- Journal of Satish Chandra catalogue (1<sup>st</sup>December 2005) by Suneet Chopra, Art Critic.*
- Kala of Satish Chandra journal published by razyalalitkala academy, lucknow.*
- Journal Satish Chandra Nature Panorama by India Today.*
- Appreciation of Satish Chandra northern plain by saffron art gallery.*
- Master of atmosphere a journal by dhoomimal art gallery, Delhi.*
- <http://fineartandartist.blogspot.in/2009/05/satish-chandra.html>
- [http://www.rolibooks.com/index.php?option=com\\_virtuemart&page=shop.product\\_details&flypage=flypage.tpl&category\\_id=4&product\\_id=425&Itemid=5](http://www.rolibooks.com/index.php?option=com_virtuemart&page=shop.product_details&flypage=flypage.tpl&category_id=4&product_id=425&Itemid=5)
- <http://indiatoday.intoday.in/story/exhibition-of-paintings-by-late-satish-chandra-at-habitat-centre/1/180941.html>
- <http://fineartakademiup.nic.in/annual.htm>
- <http://www.artprice.com/artist/298470/sintra-satish-chandra>

*SATISH CHANDRA AND HIS ROMANTICISM WITH SCENIC BEAUTY*

*Abdul Salam Khan\* , Saroj Bhargava\*\**

---

<http://www.gallerieganesha.com/artist/satish-chandra/satish-chandra-6.html>

<http://www.saffronart.com/artists/satish-sinha>